

documents (2015)

solo exhibition by Chloë Reid

gallery aop, Johannesburg

'documents' is a series of works that decontextualize the highly developed language of maps, setting the stage for an imaginary leap towards a form of 'original position' from which to reinterpret this language.

The attempt to deconstruct any subject is contestable, let alone one as broad and complex as map-making. Hence the 'imaginary leap' that opens the way for the paring down of the overt and established meanings of the language, leaving only its structural grammar - the shape, mark and colour. In this way, Reid tentatively charts a way back to a fictional pre-language period or perhaps forward, to a fictional post-language period.

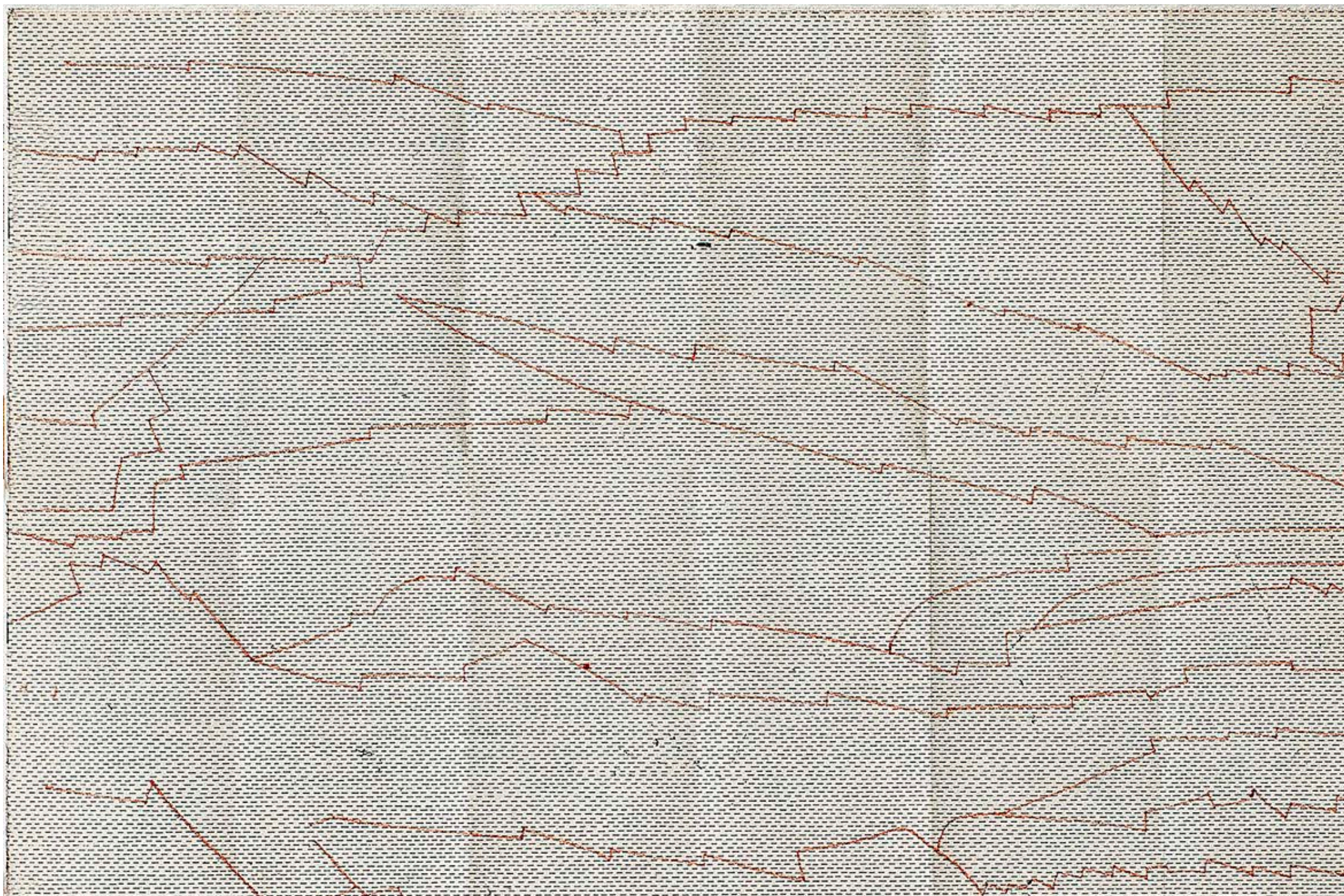
Maps stand as the medium in this endeavour, as the evidence of the absurdity inherent in our attempts to understand the relationship between the outside world and the self. The 'documents' of the exhibition are rendered, on practical terms, useless through processes of stripping down, layering and removing. What remains is a hypothesis for what might happen if we were left with the language of maps but knew nothing about the geographical, social and political worlds they describe.

documents provides a response to the bombardment of information and the structural directives that have become the contemporary quotidian.



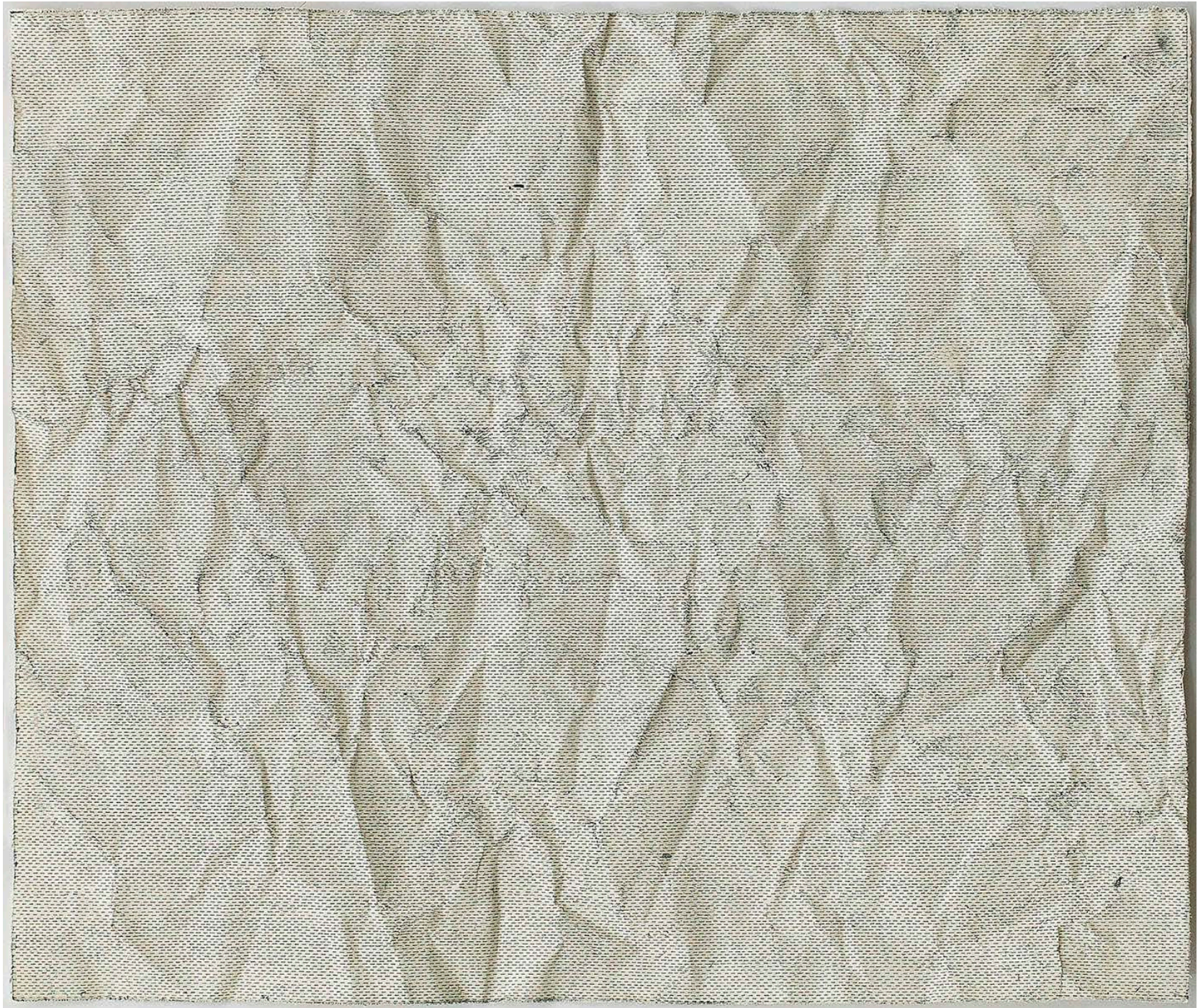








this and previous pages:  
Untitled (documents), 2015  
etching  
sizes variable







Untitled, 2015  
street map of Johannesburg





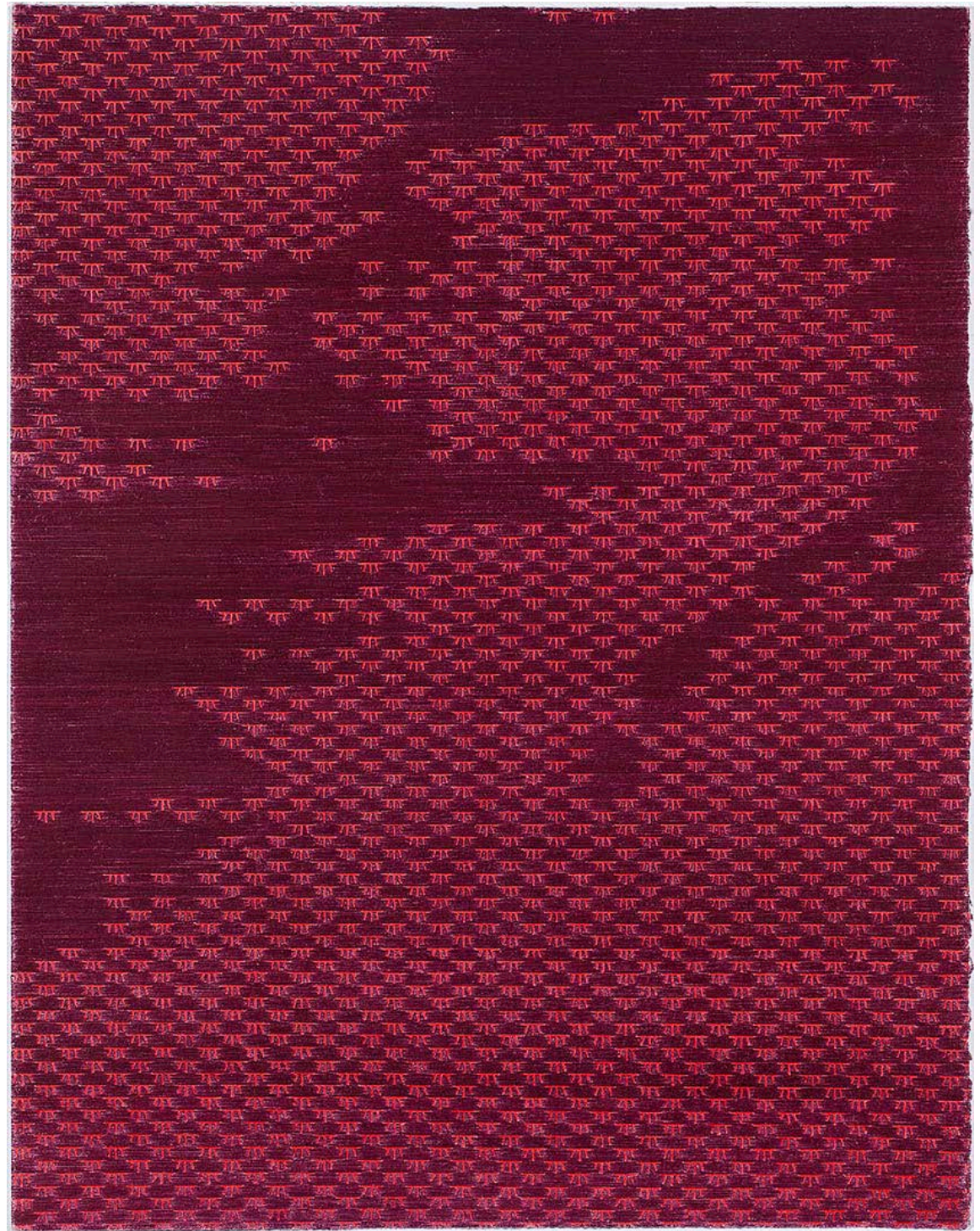




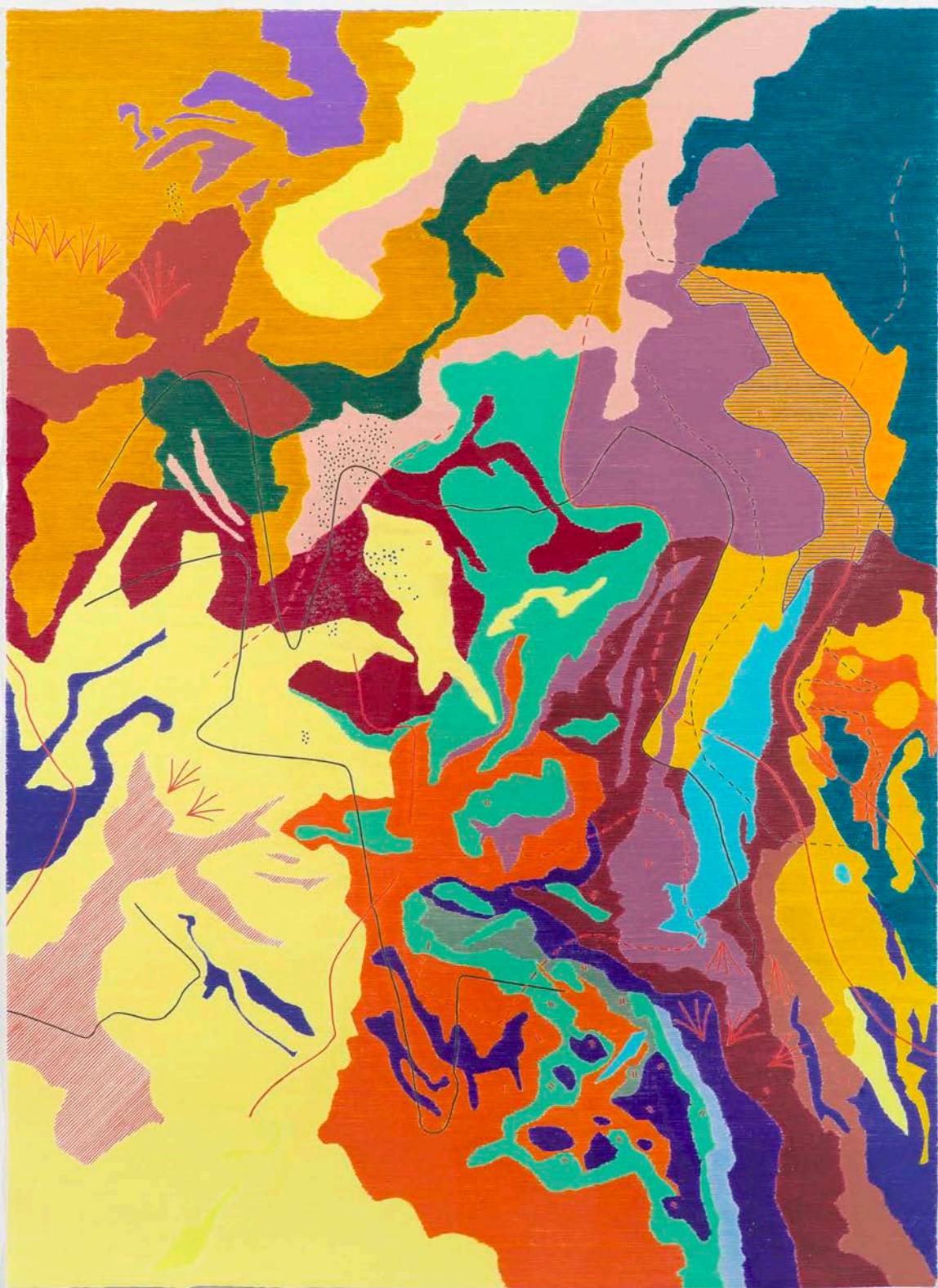
Shan Map, 2015  
colour pencil on paper, 300 gsm  
60 x 100 cm



Swamp, 2015  
colour pencil on paper, 300 gsm  
90 x 60 cm



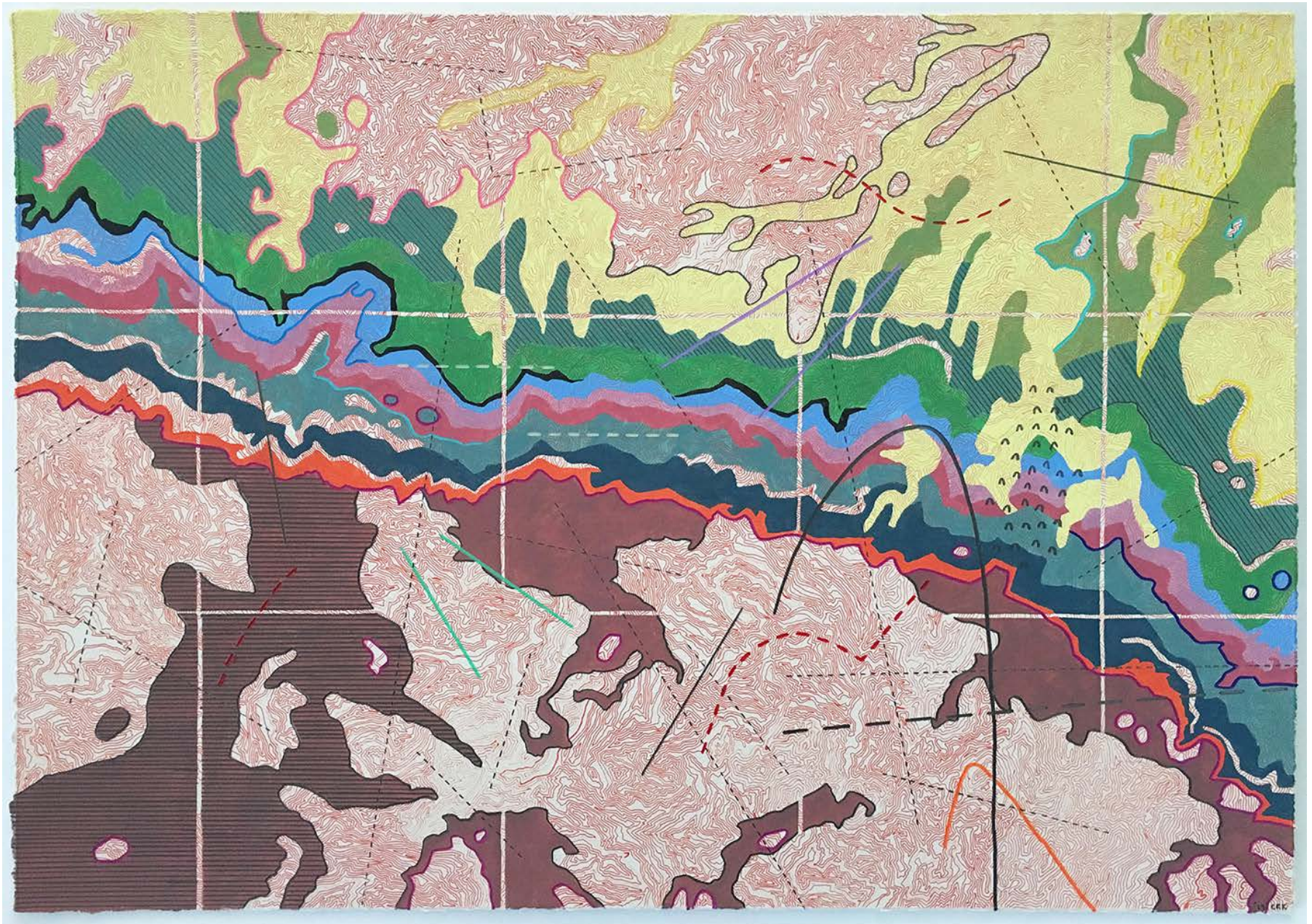




Map Drawing (from Documents), 2015  
colour pencil on paper 300 gsm  
100 x 70 cm



Untitled (documents), 2015  
watercolour, graphite and colour pencil on lithographic print  
21 x 29,7 cm





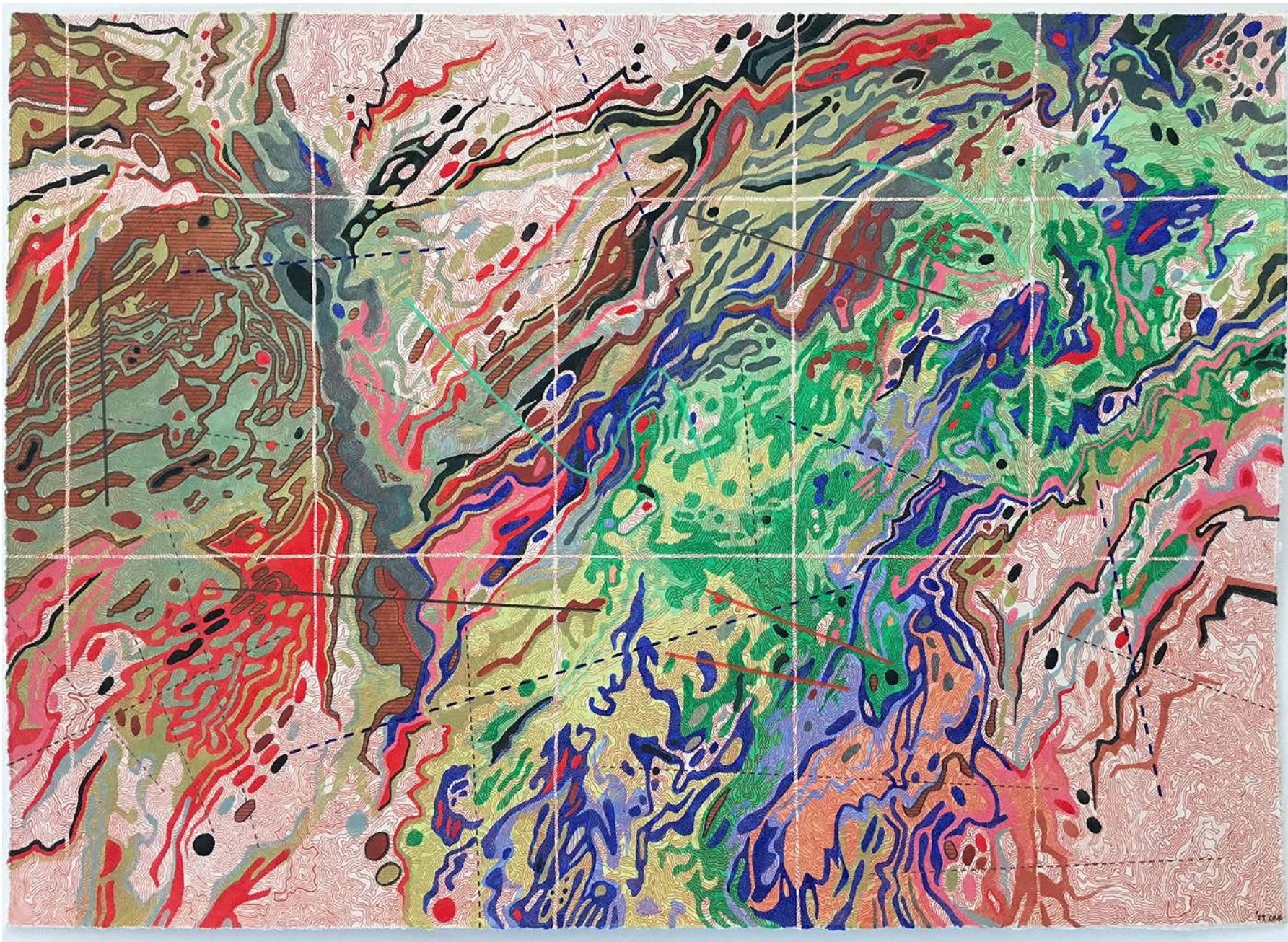
Untitled (documents), 2015

watercolour, graphite and colour pencil on lithographic print

21 x 29,7 cm







Untitled (documents), 2015  
watercolour, graphite and colour pencil on lithographic print  
21 x 29,7 cm