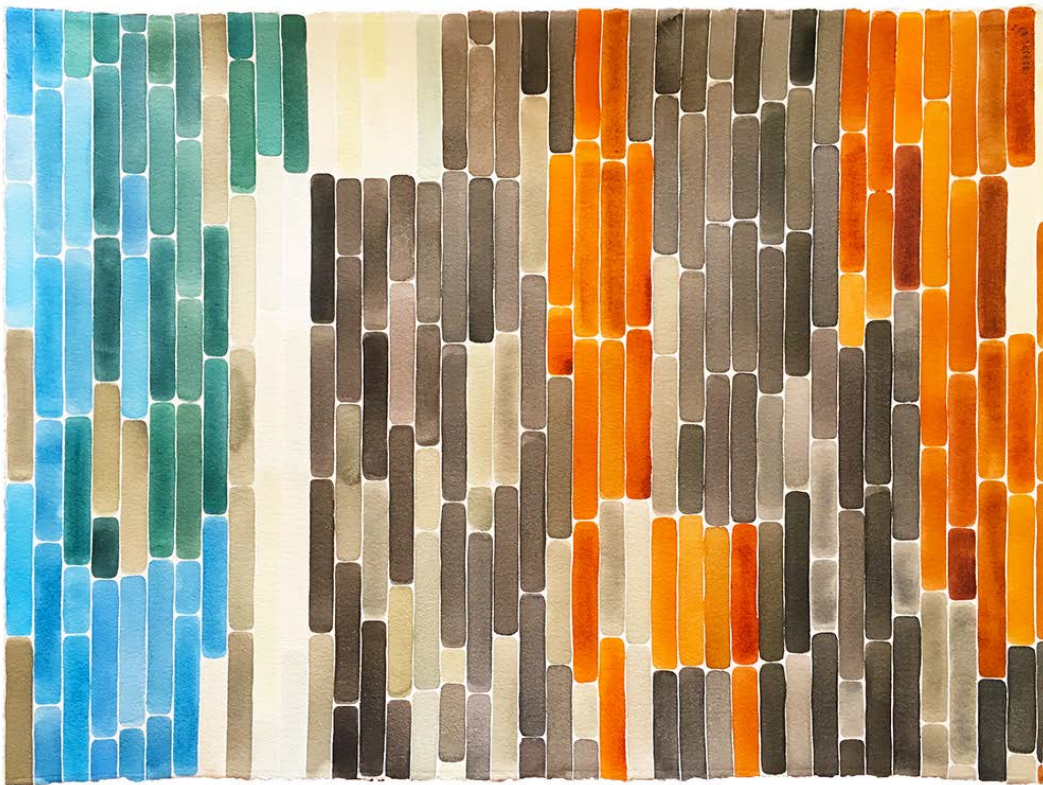


walls and floors
by Chloë Reid



The Valley I, 2020
watercolour and pencil on paper 385 gsm
56 x 76 cm

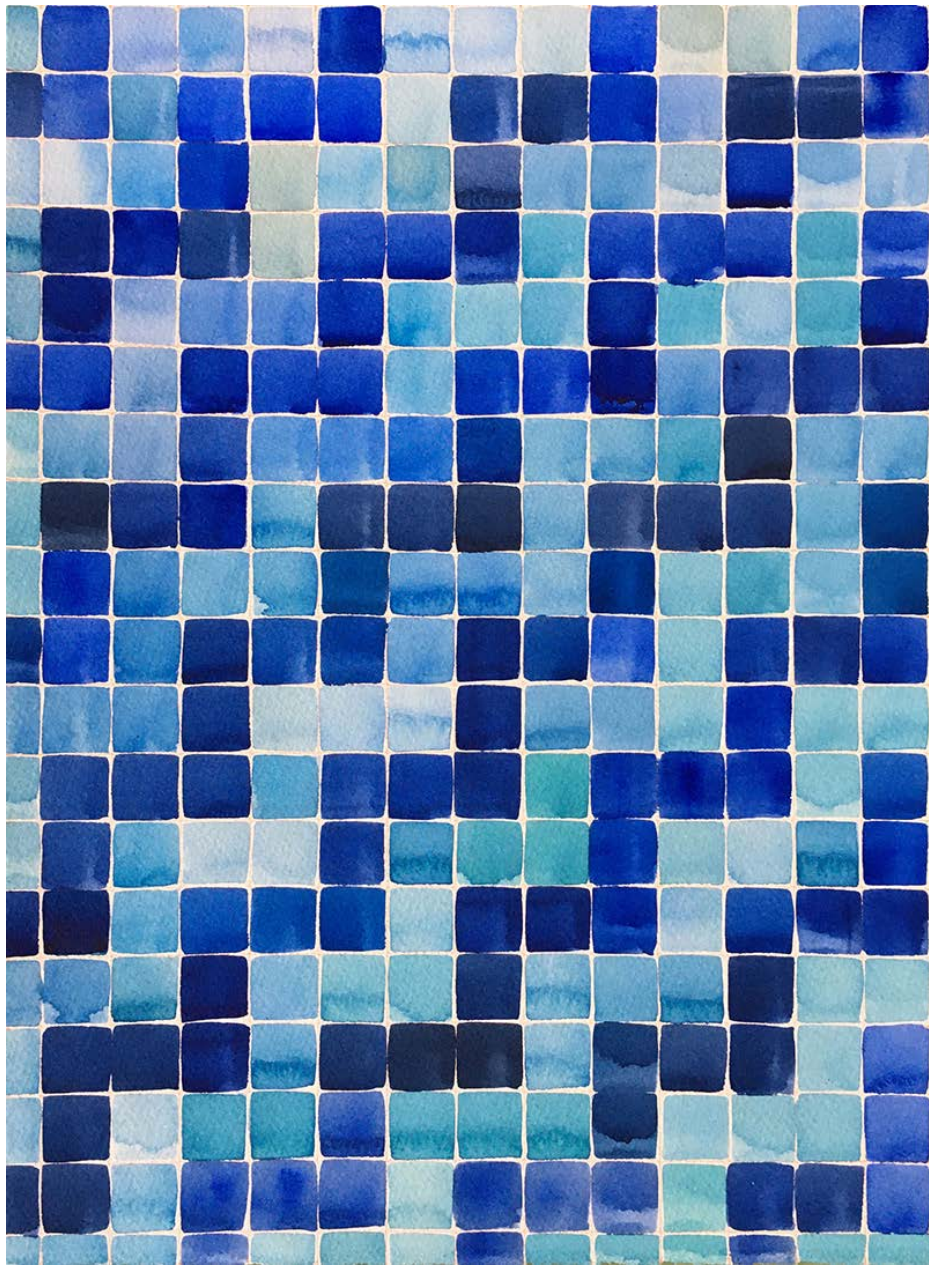


The Valley II, 2020
watercolour and pencil on paper 385 gsm
56 x 65 cm



Tyrone, 2020
watercolour and pencil
on paper 300 gsm
56 x 76 cm





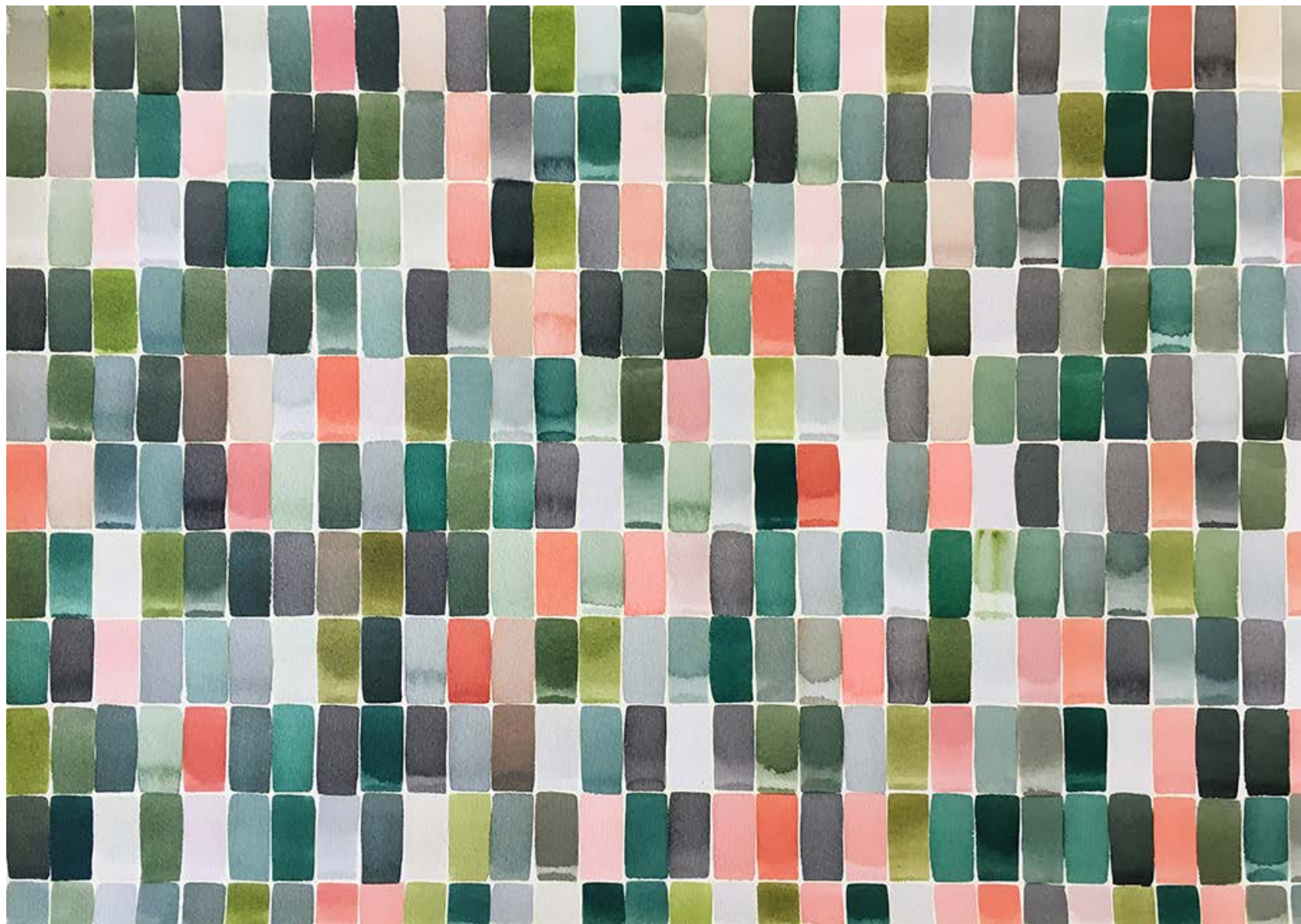
The Hanging Church I, 2022
watercolour and pencil on paper 640 gsm
370 x 300 mm

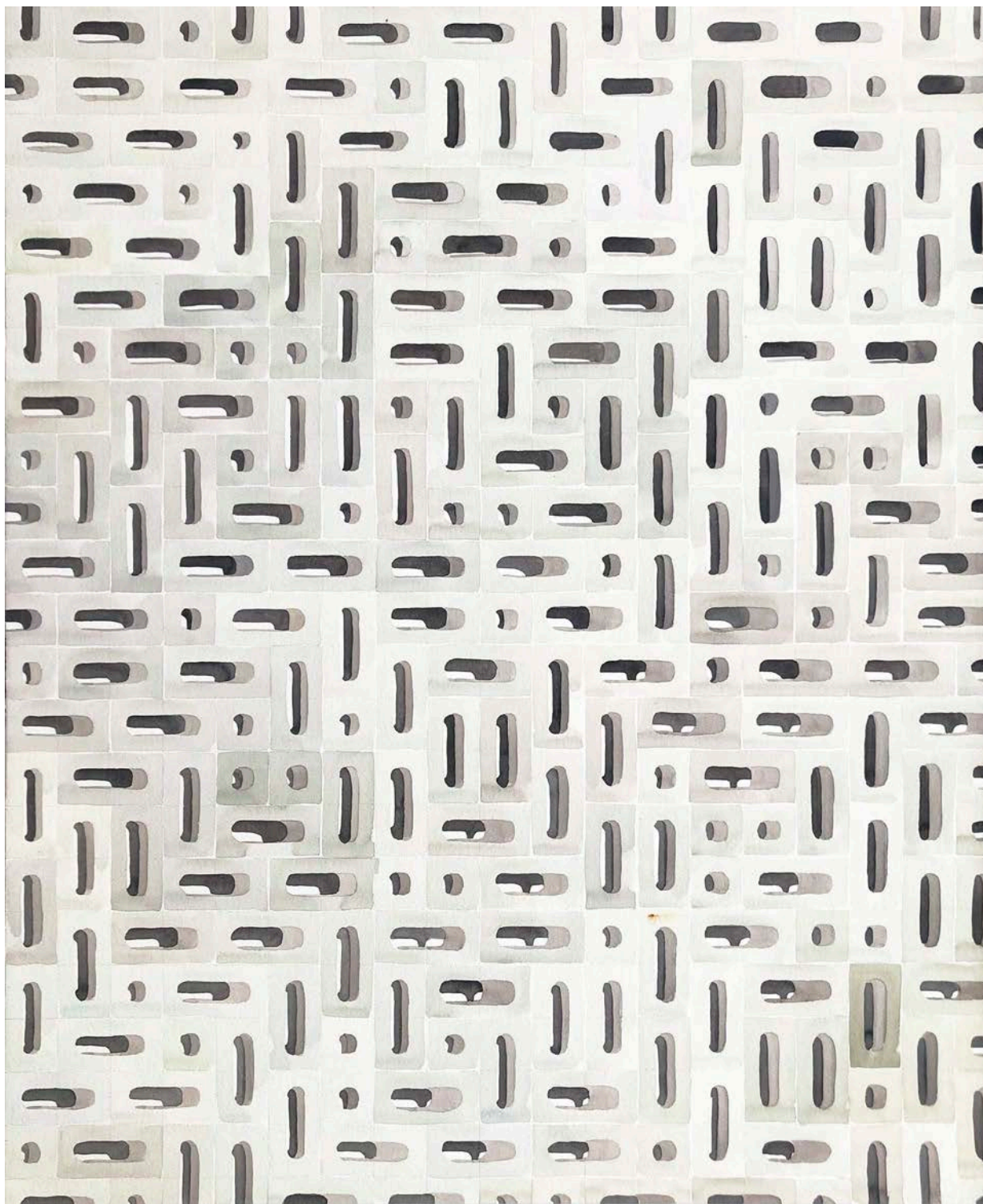


Master Supermarket and Electronics, 2022
watercolour and pencil on paper 640 gsm
500 x 650 mm

Good Morning (1959),
2022

watercolour and pencil
on paper 300 gsm
560 x 760 mm





Untitled (breezeblocks), 2023

watercolour and pencil on paper 640 gsm
800 x 700 mm



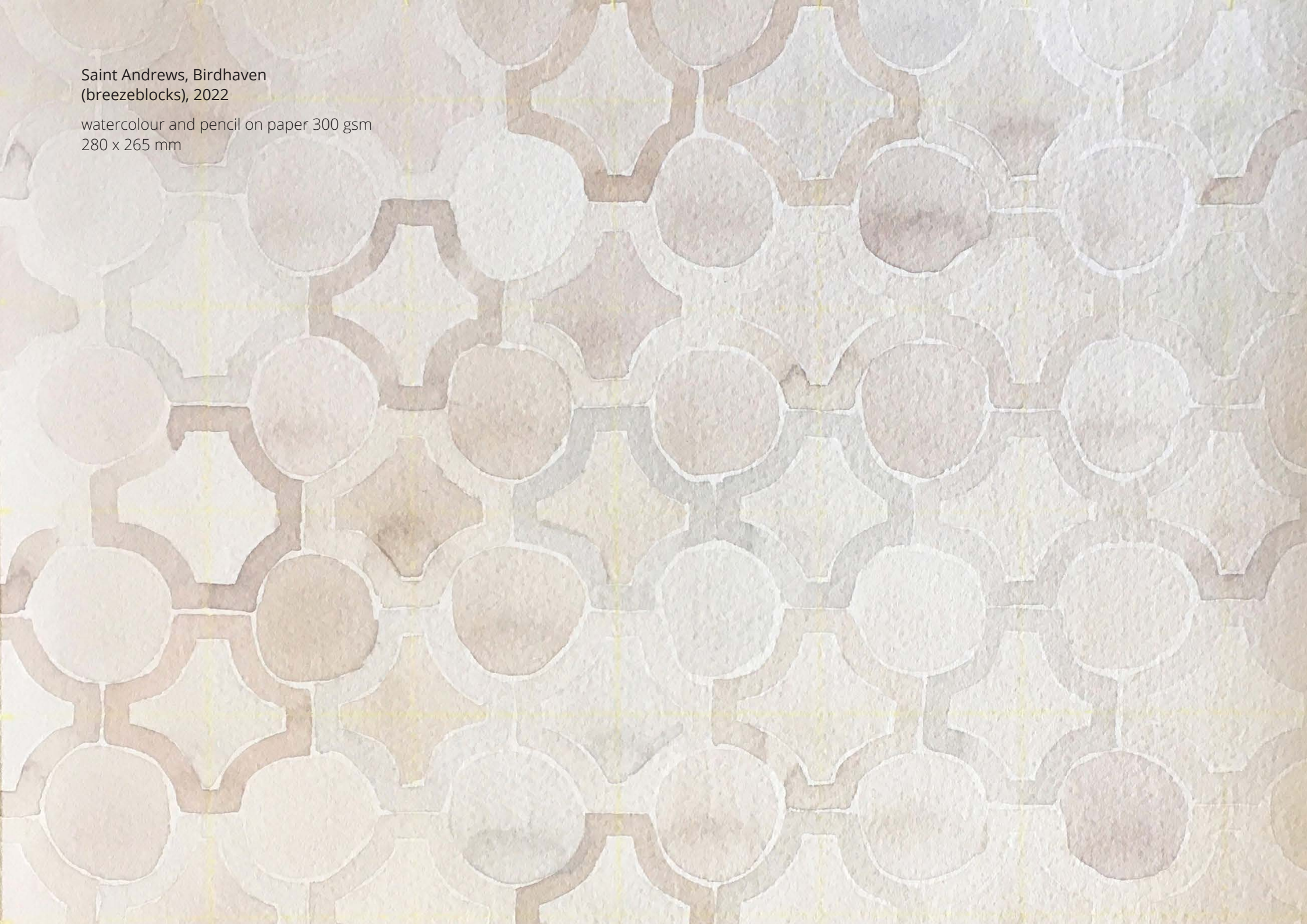
Untitled V & VI (breezeblocks), 2022

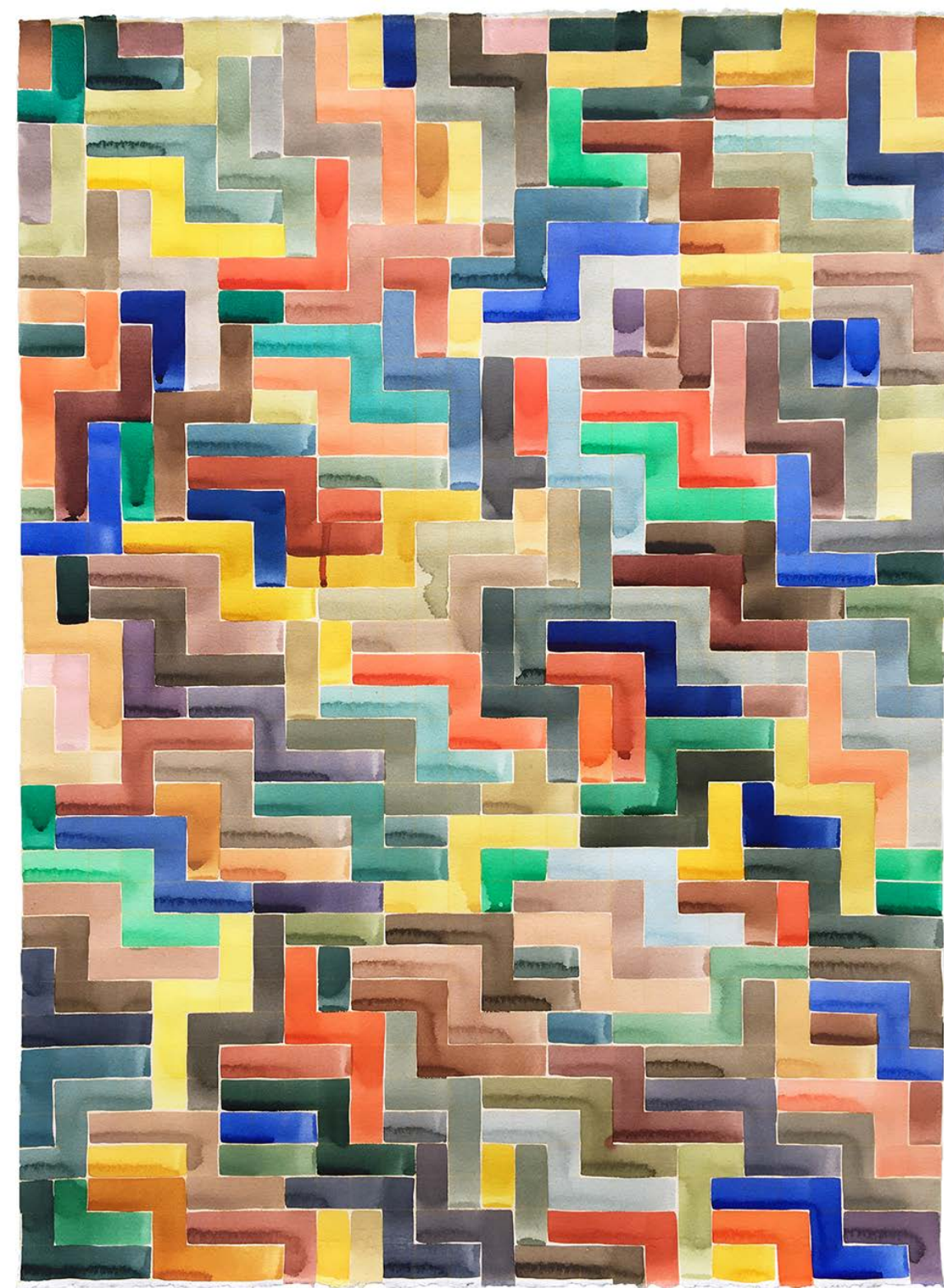
watercolour and pencil on paper 640 gsm
300 x 240 mm (each)



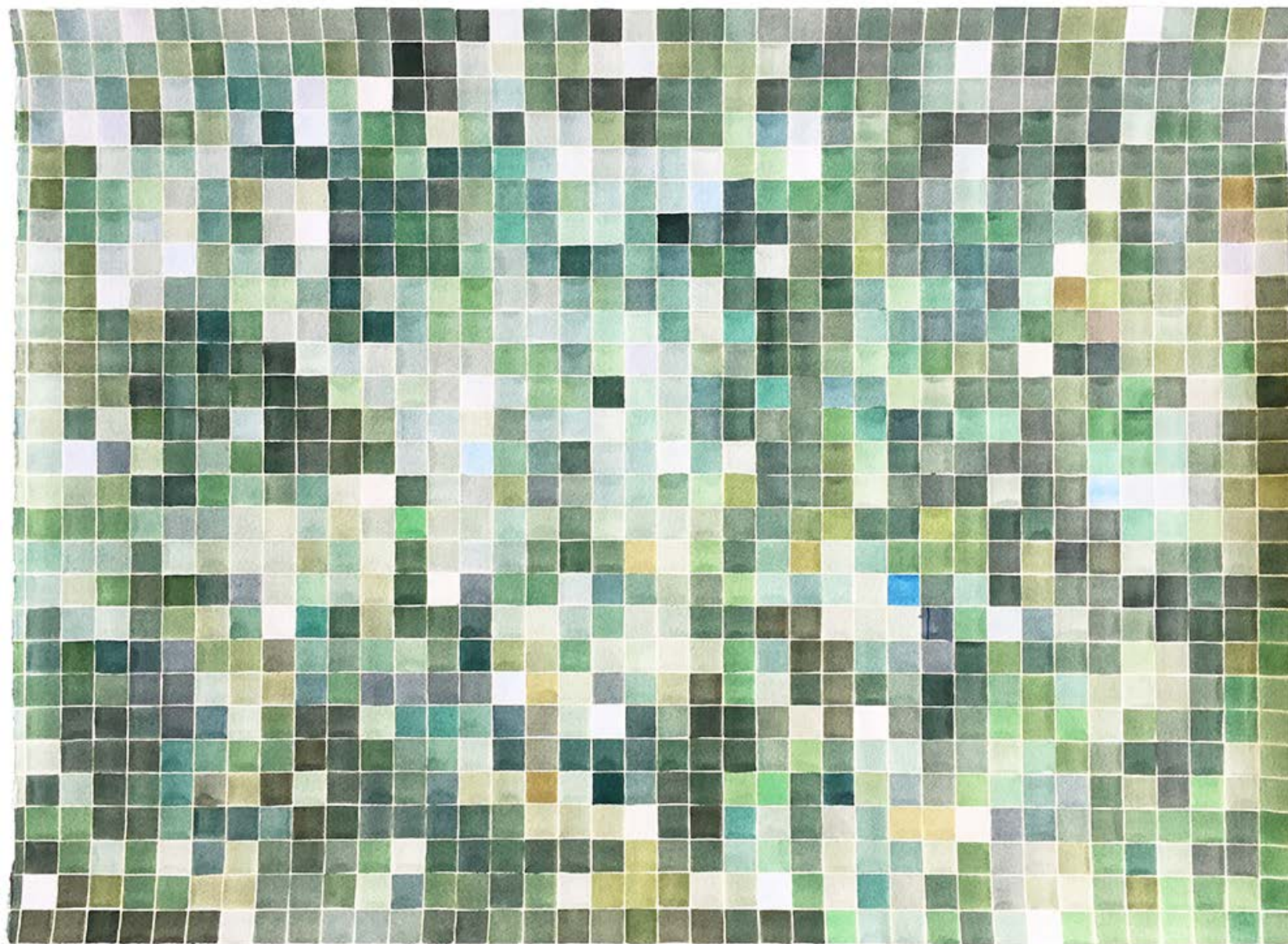
Saint Andrews, Birdhaven
(breezeblocks), 2022

watercolour and pencil on paper 300 gsm
280 x 265 mm



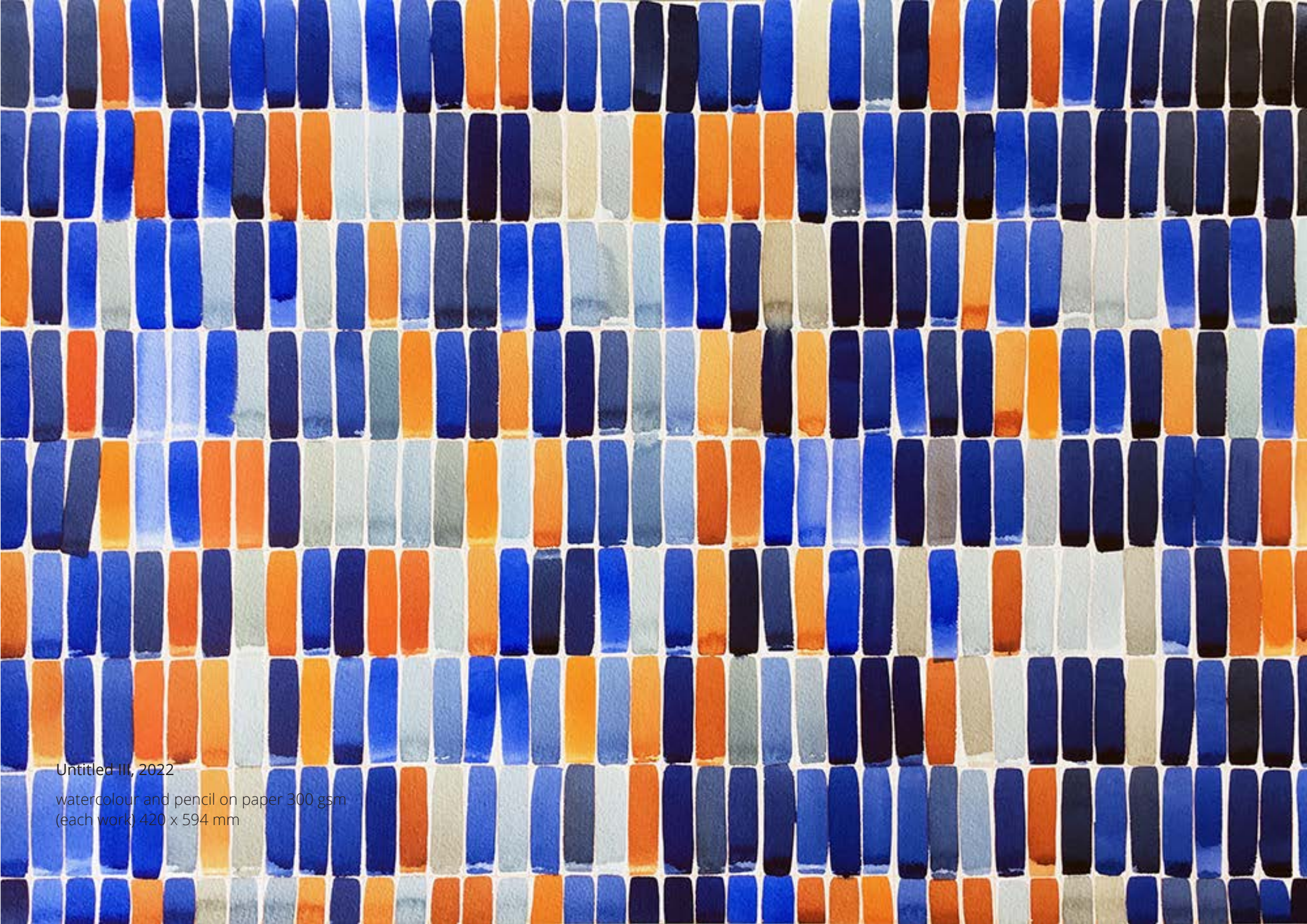


Mexican Pottery V
(The Grammar of Ornament), 2022
watercolour and pencil on paper 300 gsm
760 x 560 mm



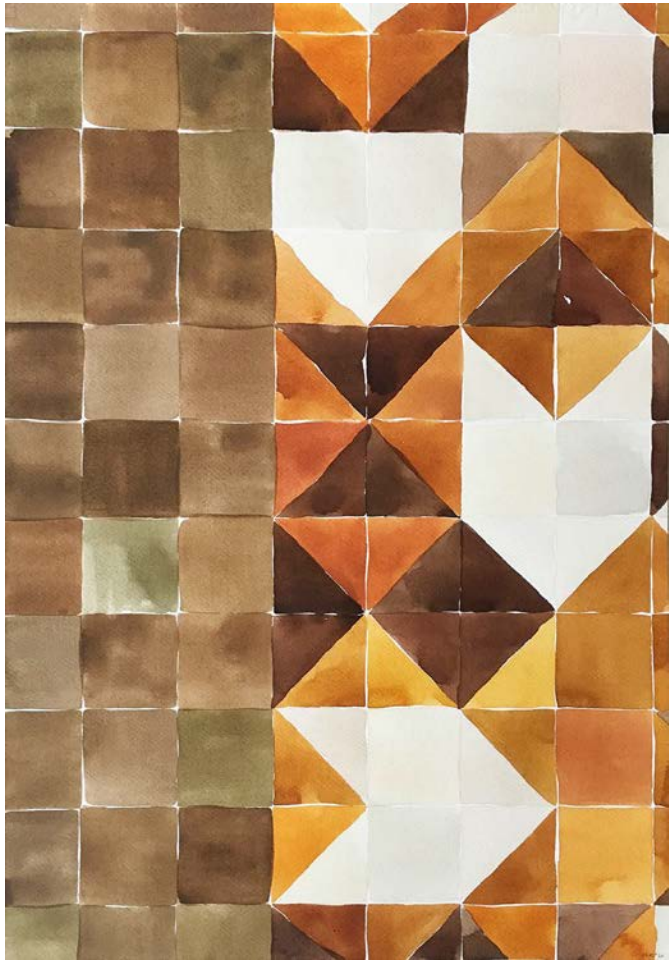
Home Affairs (Edenvale)
2020

watercolour and pencil on
paper 300 gsm
56 x 76 cm



Untitled III, 2022

watercolour and pencil on paper 300 gsm
(each work) 420 x 594 mm

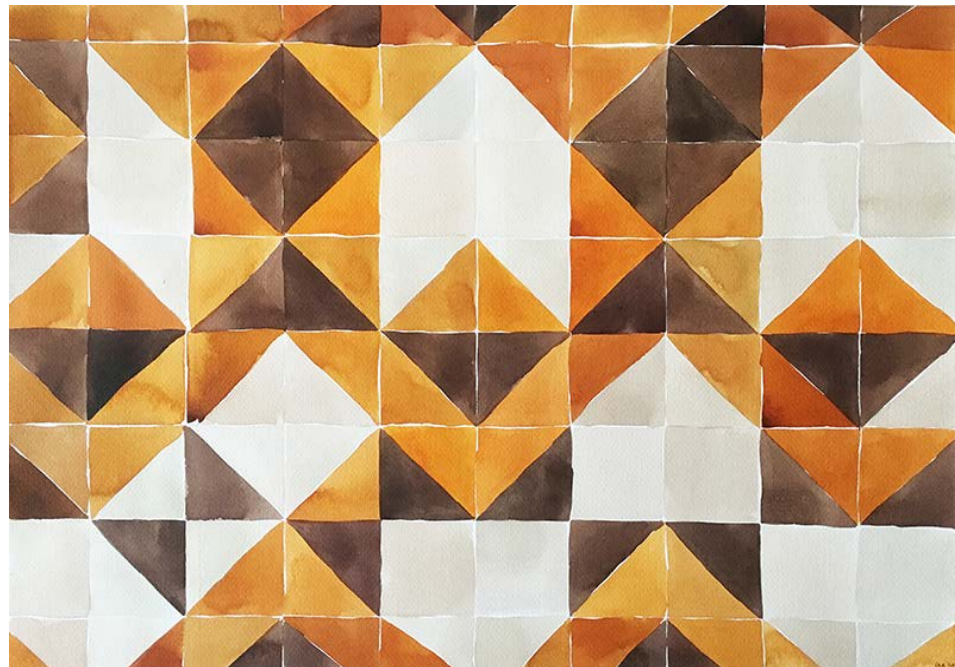


A patterned floor, a practical choice for
the eating area, 2020

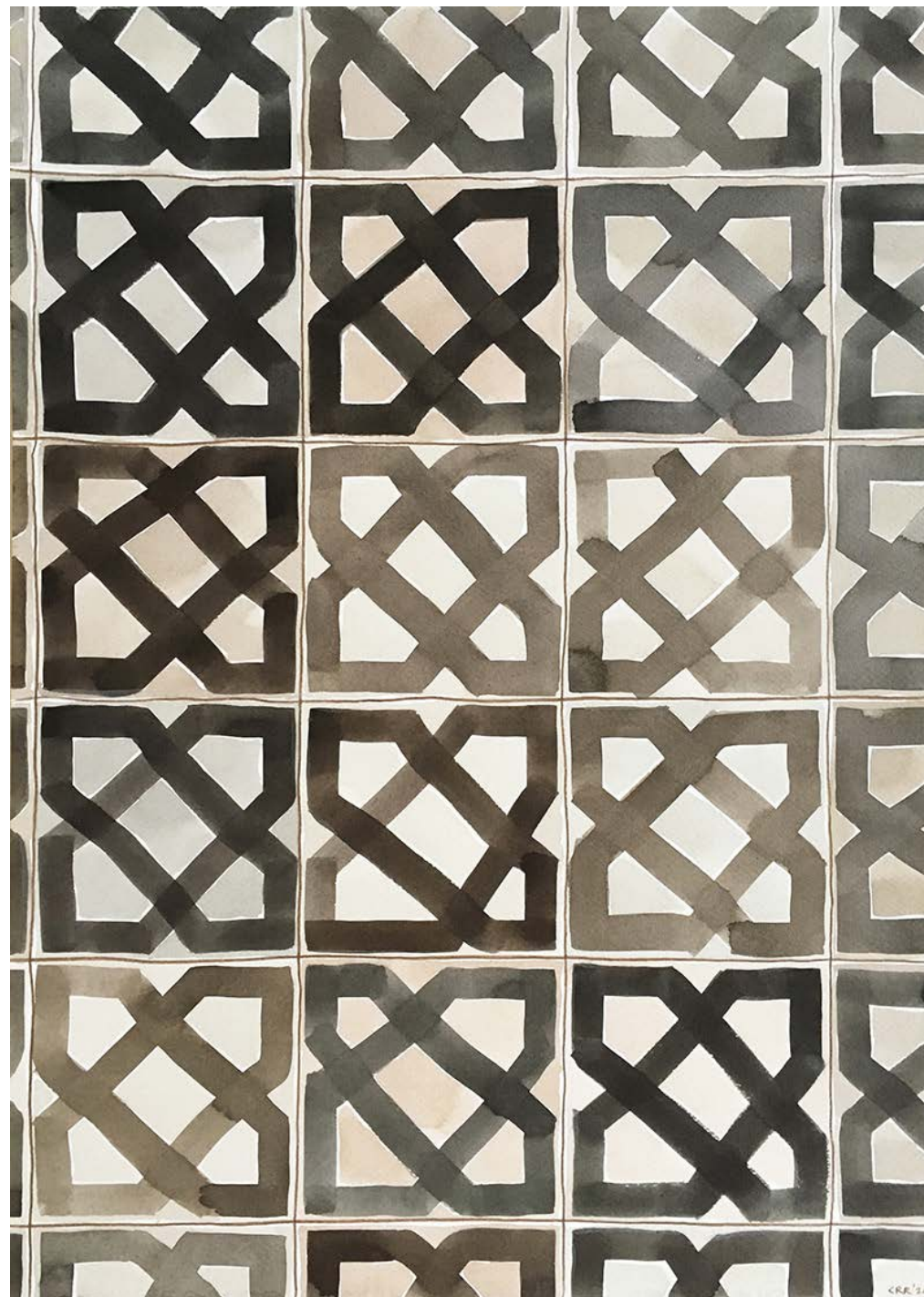
watercolour on watercolour paper 300 gsm

diptych

420 x 594 mm (each)



ceramic floor tiles, 2020
watercolour on watercolour
paper 300 gsm
420 x 594 mm





The green Wilton carpet square under the dining table defines the eating area in an open-plan room, and contrasts with the white ceramic tiles and white walls, 2020

watercolour on watercolour
paper 300 gsm
420 x 594 mm

(following page)
Herringbone III, 2021

watercolour and pencil on
paper 300 gsm
56 x 76 cm

