

hats off! (2013)

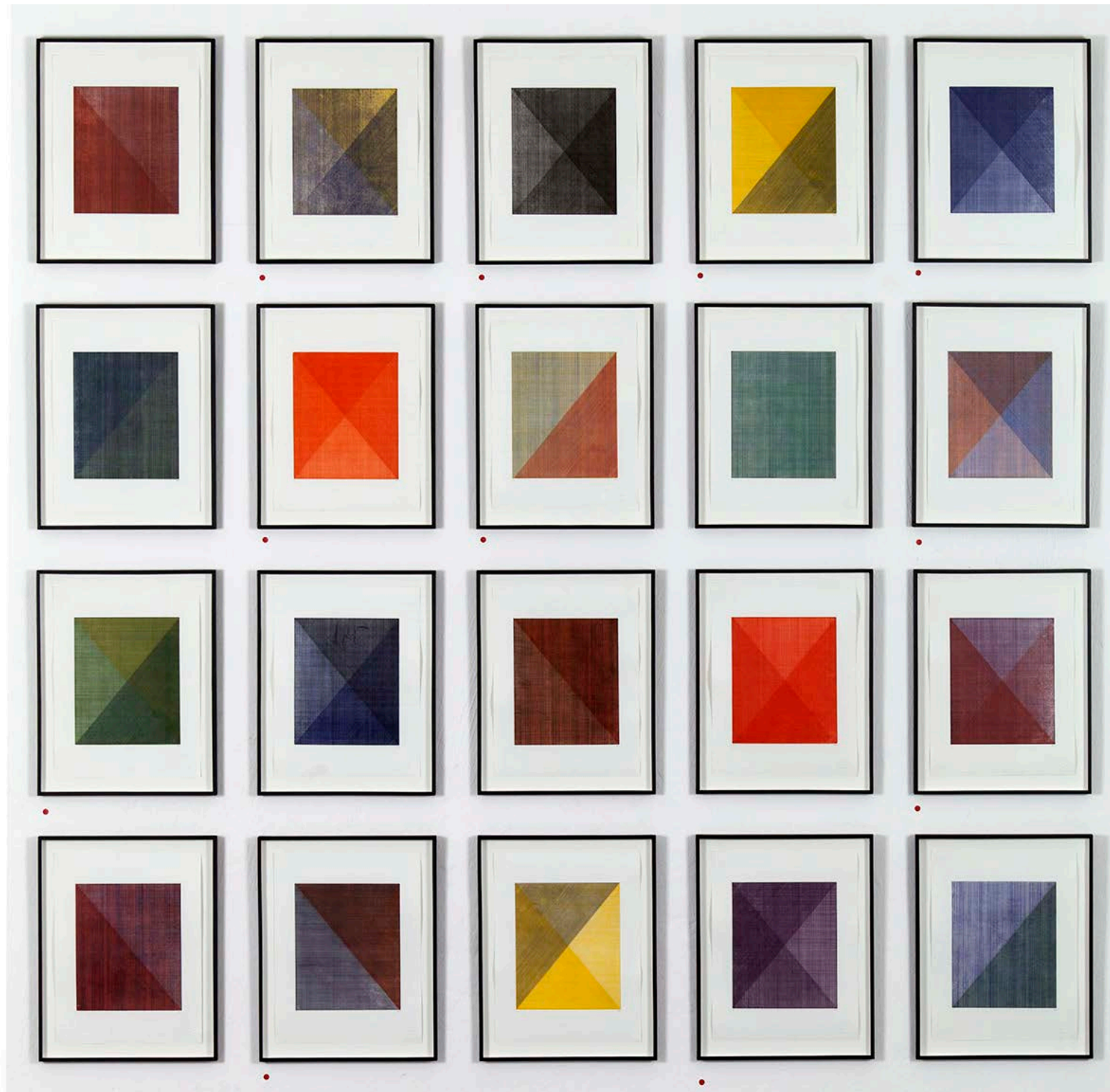
solo exhibition by Chloë Reid

gallery aop, Johannesburg

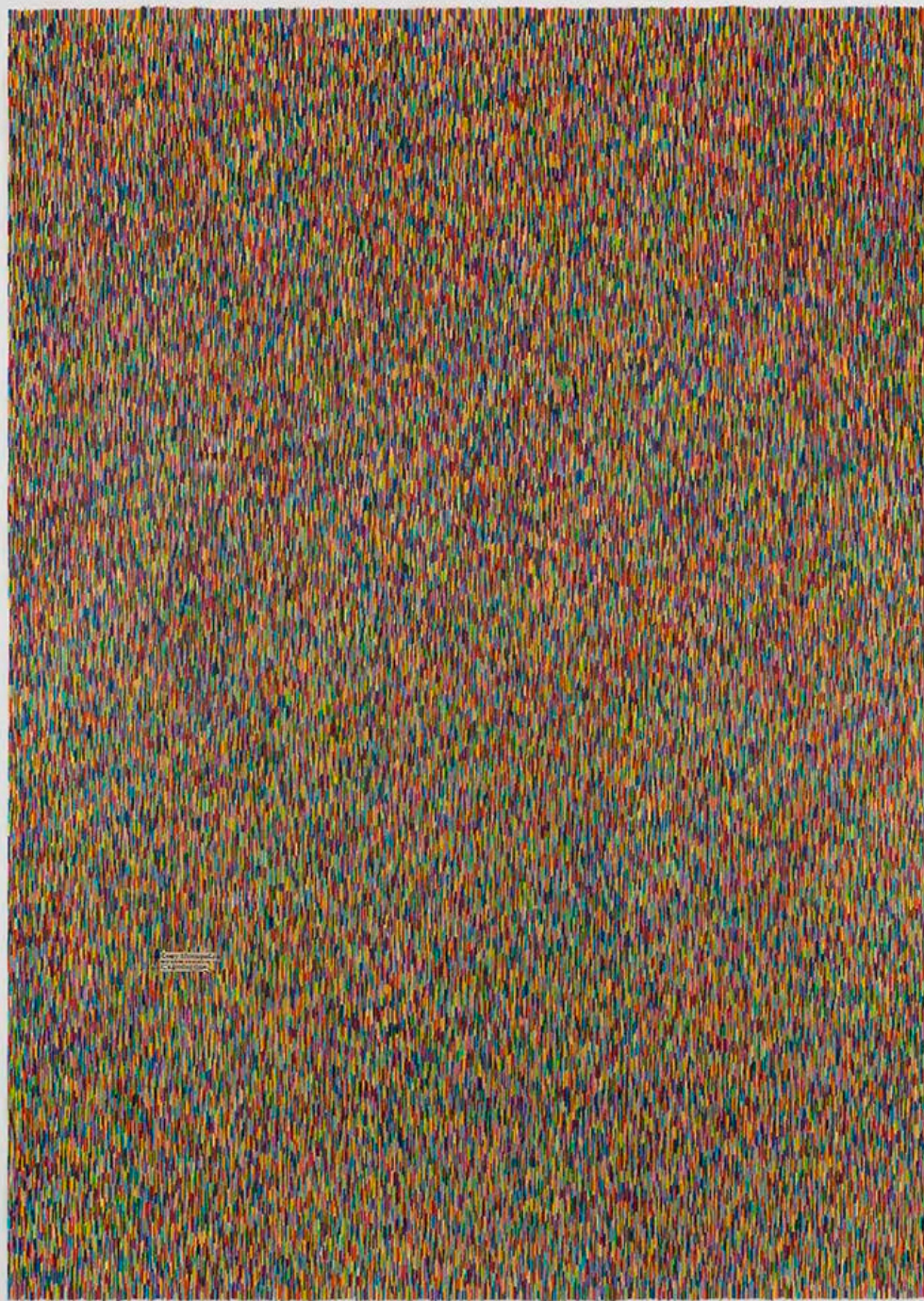
'What I really want, doctor, is this. On the day when the manuscript reaches the publisher, I want him to stand up - after he's read it through, of course - and say to his staff, "Gentlemen, Hats off!"'

- The Plague, Albert Camus

'Hats off!' assembles a selection of narratives that consider failure as a space of potential.

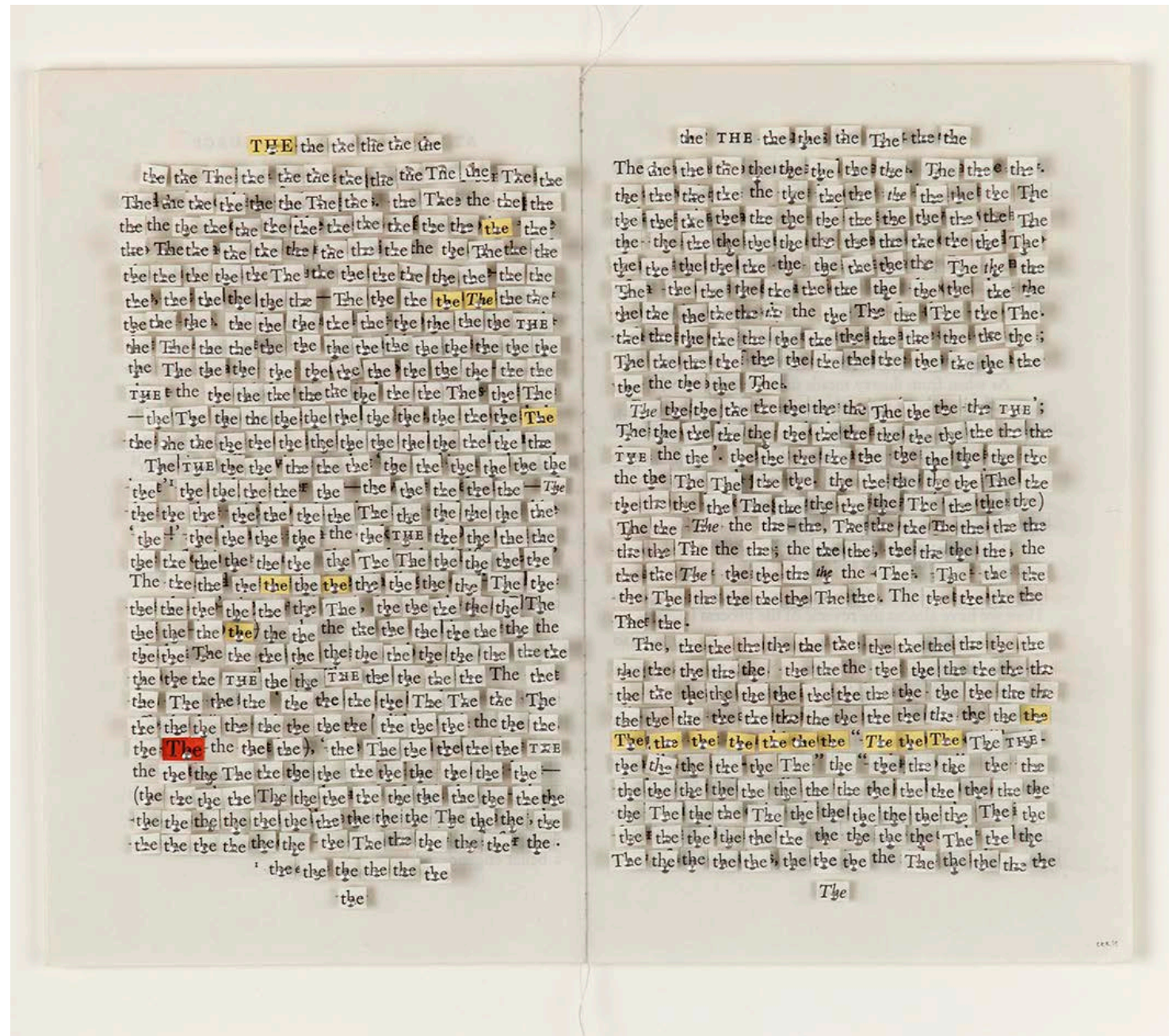


this and previous pages:
Untitled (documents), 2015
etching
sizes variable



this and previous pages:
Untitled (documents), 2015
etching
sizes variable

the, of, and, to, a, 2013
Found text, thread, pins
dimensions variable



foolscap, 2013
book pages, thread
dimensions variable



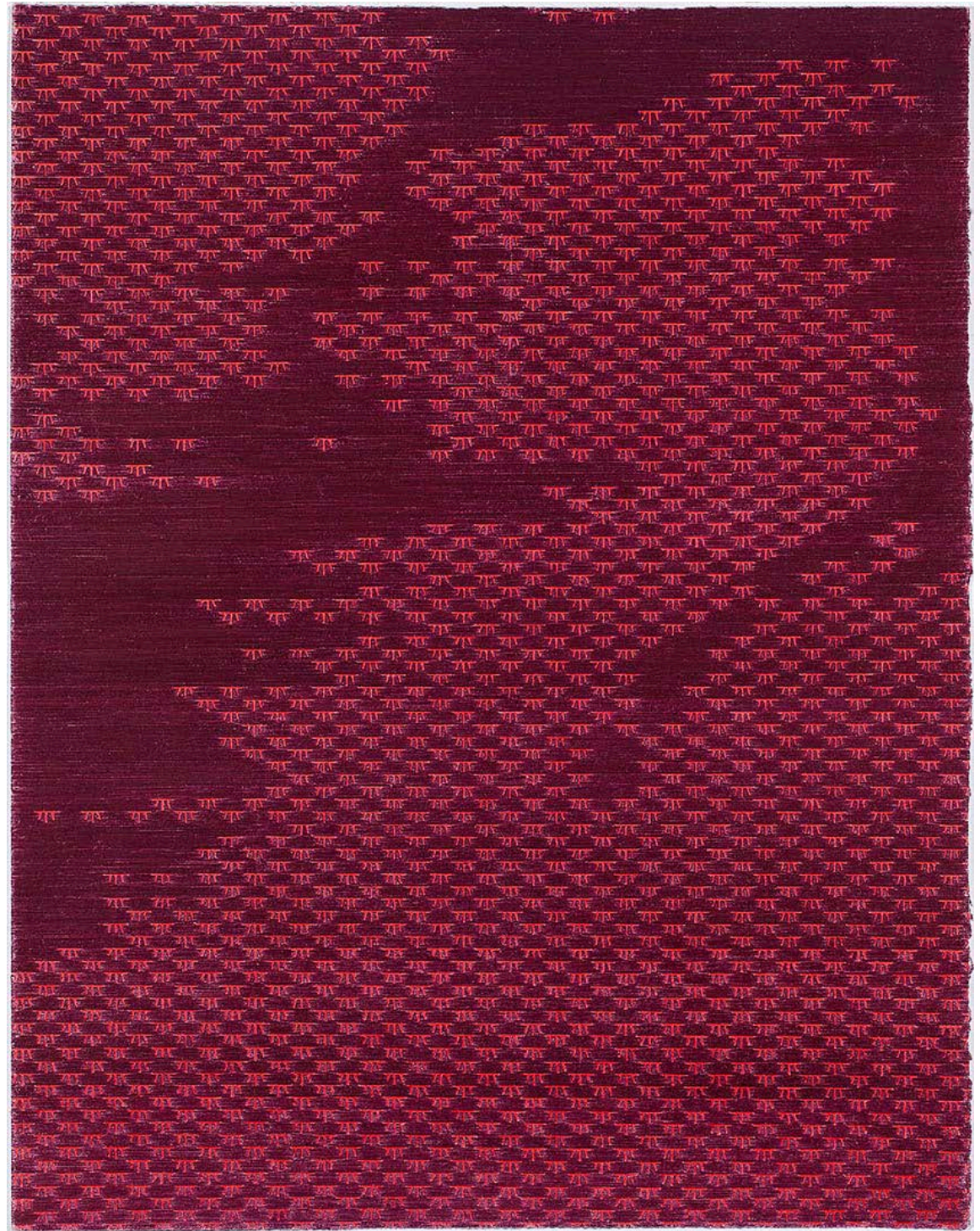


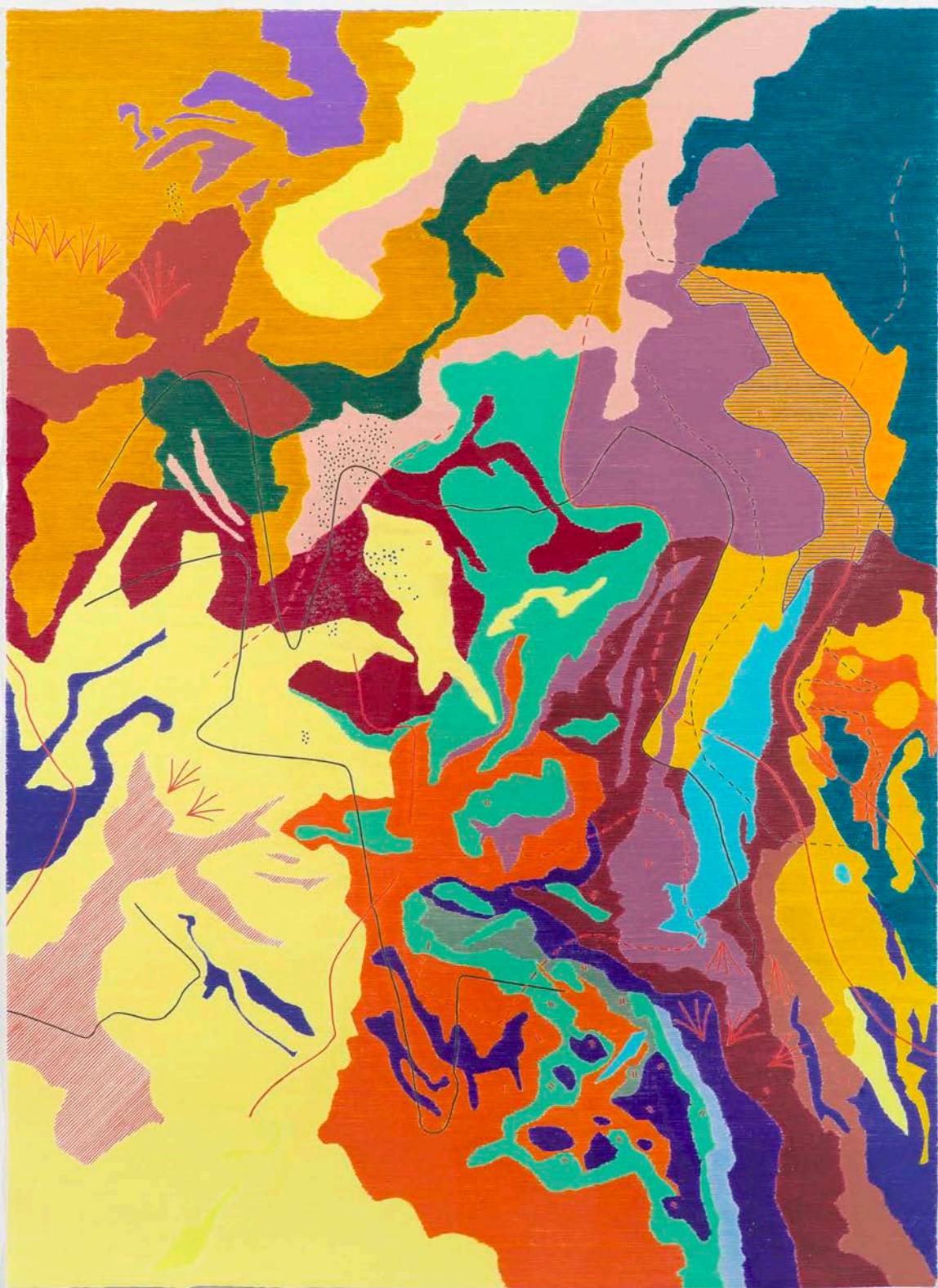
Albi World Map, 2013
colour pencil on paper
90 x 100 cm



Shan Map, 2015
colour pencil on paper, 300 gsm
60 x 100 cm

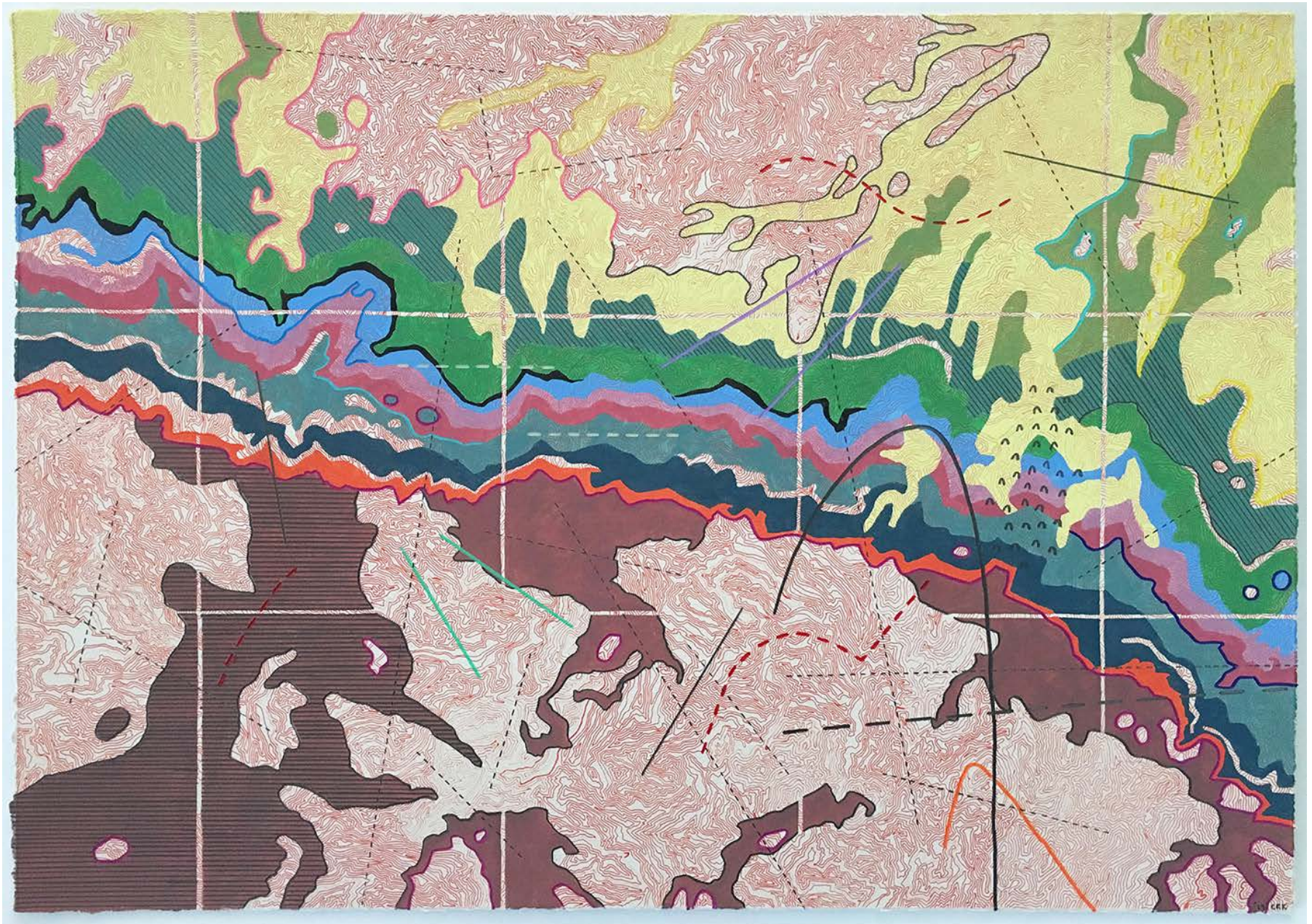
Swamp, 2015
colour pencil on paper, 300 gsm
90 x 60 cm





Map Drawing (from Documents), 2015
colour pencil on paper 300 gsm
100 x 70 cm

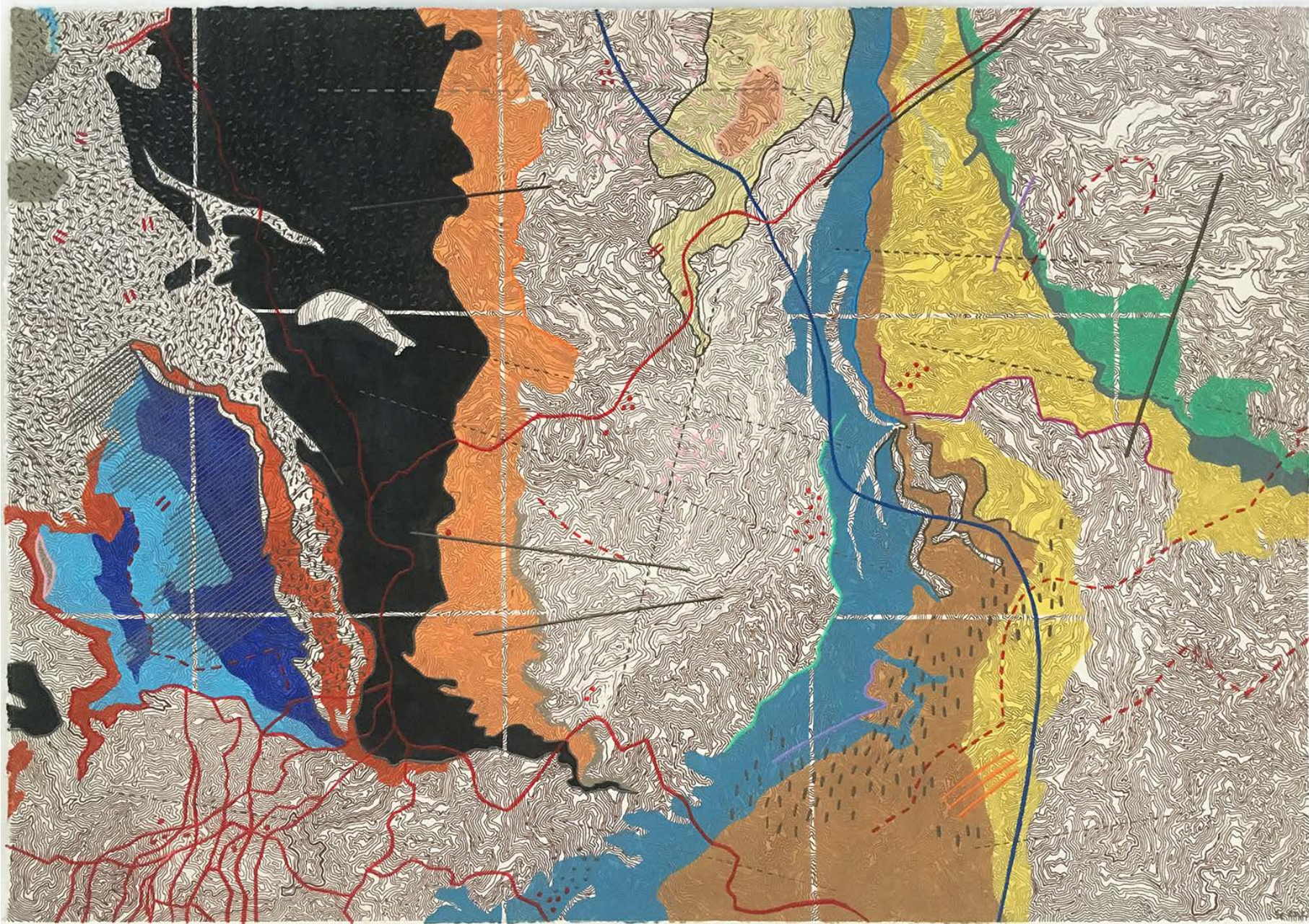
Untitled (documents), 2015
watercolour, graphite and colour pencil on lithographic print
21 x 29,7 cm

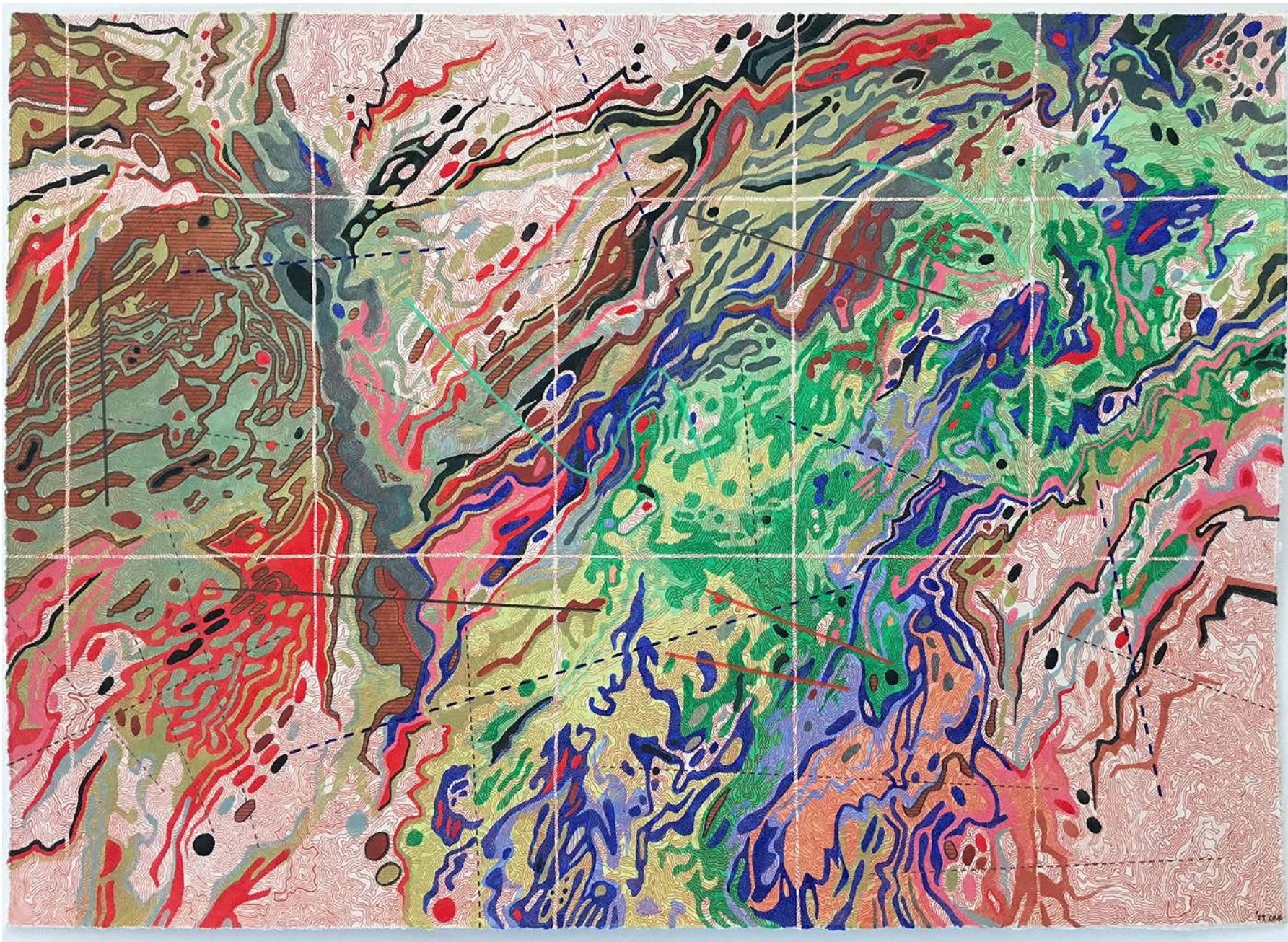


Untitled (documents), 2015

watercolour, graphite and colour pencil on lithographic print

21 x 29,7 cm





Untitled (documents), 2015
watercolour, graphite and colour pencil on lithographic print
21 x 29,7 cm